

IL-32 Antibody
Catalog # ASC10399**Specification**

IL-32 Antibody - Product Information

Application	WB, IHC-P, IF, E
Primary Accession	P24001
Other Accession	AAH09401 , 9235
Reactivity	Human, Mouse
Host	Rabbit
Clonality	Polyclonal
Isotype	IgG
Application Notes	IL-32 antibody can be used for the detection of IL-32 by Western blot at 5 - 10 µg/mL. Antibody can also be used for immunohistochemistry starting at 5 µg/mL. For immunofluorescence start at 20 µg/mL.

IL-32 Antibody - Additional InformationGene ID **9235****Other Names**

IL-32 Antibody: NK4, TAIF, TAIFa, TAIFb, TAIFc, TAIFd, IL-32beta, IL-32alpha, IL-32delta, IL-32gamma, NK4, Interleukin-32, Natural killer cells protein 4, IL-32, interleukin 32

Target/Specificity

IL-32 antibody was raised against a 15 amino acid synthetic peptide from near the carboxy terminus of human IL-32. The immunogen is located within the last 50 amino acids of IL-32.

Reconstitution & Storage

IL-32 antibody can be stored at 4°C for three months and -20°C, stable for up to one year. As with all antibodies care should be taken to avoid repeated freeze thaw cycles. Antibodies should not be exposed to prolonged high temperatures.

Precautions

IL-32 Antibody is for research use only and not for use in diagnostic or therapeutic procedures.

IL-32 Antibody - Protein Information**Name** IL32**Synonyms** NK4, TAIF**Function**

Cytokine that may play a role in innate and adaptive immune responses. It induces various cytokines such as TNFA/TNF-alpha and IL8. It activates typical cytokine signal pathways of NF-kappa-B and p38 MAPK.

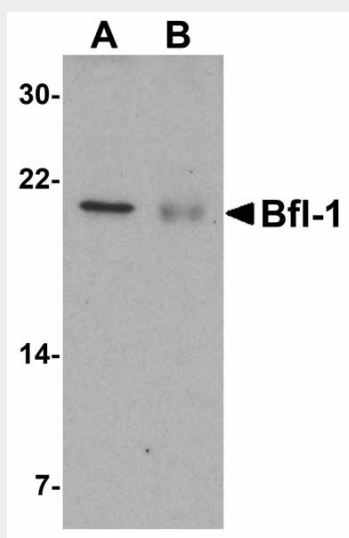
Cellular Location
Secreted.**Tissue Location**

Selectively expressed in lymphocytes. Expression is more prominent in immune cells than in non-immune cells

IL-32 Antibody - Protocols

Provided below are standard protocols that you may find useful for product applications.

- [Western Blot](#)
- [Blocking Peptides](#)
- [Dot Blot](#)
- [Immunohistochemistry](#)
- [Immunofluorescence](#)
- [Immunoprecipitation](#)
- [Flow Cytometry](#)
- [Cell Culture](#)

IL-32 Antibody - Images

Western blot analysis of Bfl-1 in (A) human kidney and (B) human lung tissue lysate with Bfl-1 antibody at 1 μ g/mL.

IL-32 Antibody - Background

IL-32 Antibody: Interleukin-32 (IL-32) was initially identified as a transcript (NK4) that is selectively expressed in lymphocytes and NK cells and whose expression is increased following activation by IL-2. It was later re-isolated from an IL-18-treated lung carcinoma cell line and re-named IL-32. IL-32 is unusual in that it does not share sequence homology with known cytokine families and is highly expressed in immune tissues, existing in at least four differentially spliced isoforms. Because treatment of human monocytic and mouse macrophage cells with IL-32 induces several proinflammatory cytokines such as TNF- α , IL-8 and MIP-2, and because it is also induced in human peripheral lymphocyte cells after mitogen stimulation and in epithelial cells by IFN γ , it has been suggested that IL-32 may play a role in autoimmune and inflammatory diseases such as rheumatoid arthritis.

IL-32 Antibody - References

Dahl CA, Schall RP, He HL, et al. Identification of a novel gene expressed in activated natural killer cells and T cells. J. Immunol. 1992; 148:597-603.

Kim S-H, Han S-Y, Azam T, et al. Interleukin-32: a cytokine and inducer of TNF- α . Immunity 2005; 22:131-42.

Cagnard N, Letourneur F, Essabbani A, et al. Interleukin-32, CCL2, PF4F1 and GFD10 are the only cytokine/chemokine genes differentially expressed by in vitro cultured rheumatoid and osteoarthritis fibroblast-like synoviocytes. Eur. Cyto. Network 2005; 16:289-92.